

TL-2100CP Change Pad Indicator™ Fall/Mobility Monitor

Installation and Use Instructions

TL-2100CP

Change Pad Indicator™

Fall Monitor

• Automatically tells caregivers when to replace expired sensor pads

• Adjustable volume control

With included Caregiver Key™

TamperProof™

SMART CAREGIVER CORPORATION

TECHNOLOGY PATENTED AND PATENT PENDING



TL-2100CP Change Pad Indicator™ Fall/Mobility Monitor

CAUTION: This Change Pad Indicator Fall Monitor will indicate when a sensor pad's warranty has expired only when used with Smart Caregiver Change Pad Indicator™ Timed Sensor Pads. Standard sensor pads will function normally with this monitor, but the Change Pad Indicator feature will be disabled. Call (800) 650-3637 for more information.

WARNING: Failure to comply with the warning may result in injury or death. This device is not suitable for all individuals. Other devices may be required. This device is not a substitute for visual monitoring by a caregiver. The manufacturer does not claim that this device will stop elopement and/or stop falls. This device is designed to augment caregivers' comprehensive resident mobility management program. **Test this device before each use. Read the instructions and Legal Disclaimer.**

The Smart Caregiver Corporation TL-2100CP Monitor is designed to be installed by the end user. As such, it is the entire responsibility of the buyer to insure that the system is properly installed and tested. Further, the system is not designed to replace good caregiving practices including, but not limited to:

A.) Direct patient supervision

B.) Adequate training for staff personnel for fall prevention and elopement

C.) Testing of the system before each use

WHERE PERMISSIBLE, IT IS THE SELLER'S INTENT TO LIMIT ANY LIABILITY FOR SPECIAL, CONSEQUENTIAL OR INCIDENTAL ECONOMIC DAMAGES TO REFUND OF THE PURCHASE PRICE OR REPLACEMENT OF THE GOODS. SELLER DISCLAIMS ANY LIABILITY FOR COMPENSATORY OR OTHER DAMAGES ARISING OUT OF THE USE OF THE GOODS.

WARNING: The manufacturer does not claim that this device will stop elopement and/or stop falls. This device is designed to augment caregivers' comprehensive resident mobility management program. This product is to be used by a licensed caregiver only.

Limited Warranty: Seller warrants that the goods sold will be free from defects of workmanship and manufacturing, for a period of one year from the date of sale. Other than this limited warranty, seller makes no express or implied warranties. Except for this limited warranty, NO EXPRESS OR IMPLIED WARRANTIES ARE GIVEN AND NO AFFIRMATION OF SELLER, BY WORDS OR ACTION, WILL CONSTITUTE A WARRANTY. THE GOODS BEING PURCHASED ARE BEING SOLD ON A "WITH ALL FAULTS" BASIS. THE ENTIRE RISK AS TO THE QUALITY AND PERFORMANCE OF THE GOODS IS WITH THE BUYER. SHOULD THE GOODS PROVE DEFECTIVE FOLLOWING THEIR PURCHASE, THE BUYER, AND NOT THE MANUFACTURER, DISTRIBUTOR OR RETAILER, ASSUMES THE ENTIRE COST OF ALL NECESSARY INSTALLATION, SERVICING OR REPAIRS.



SMART CAREGIVER CORPORATION

1229 North McDowell Blvd., Petaluma, CA. 94954 | Tel: 800-650-3637
sales@smartcaregivercorp.com | www.smartcaregivercorp.com

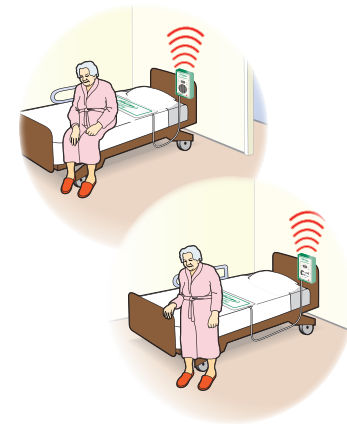
Bed Sensor Pads

BED PAD PLACEMENT

- Place the pad under the resident's shoulders to be alerted when the resident sits up in the bed.
- Place the pad under the resident's lower back/buttocks to be alerted when the resident vacates the bed.
- Place the monitor out of reach of the resident. Suitable mounting locations include: the back of headboard, the wall or under the bed. Make sure the resident cannot tamper with the monitor.

TEST THE SYSTEM

- Plug the pad into the monitor and apply pressure to the pad to activate the system. The monitor will beep twice when active.
- The alert will sound when pressure is released from the pad. Press the "Reset" button on the front of the monitor to silence the alert.



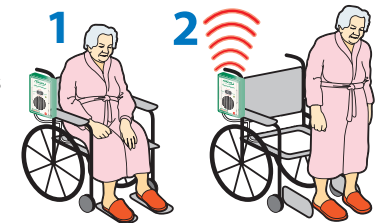
Chair Sensor Pads

WHEELCHAIR/CHAIR PAD PLACEMENT

- Center the pad on the chair seat.
- Place the monitor out of reach of the resident. Suitable mounting locations include: the back or handle of the wheelchair. Make sure the resident cannot tamper with the monitor.

TEST THE SYSTEM

- Plug the pad into the monitor and apply pressure to the pad to activate the system. The monitor will beep twice when active.
- The alert will sound when pressure is released from the pad. Press the "Reset" button on front of the monitor to silence the alert.



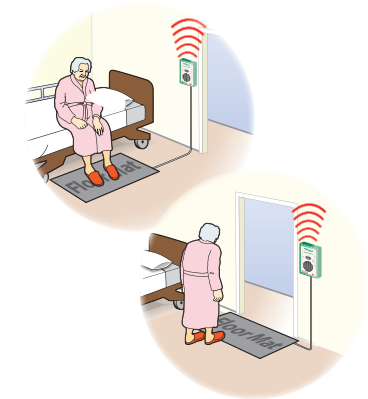
Seat Belt

SEAT BELT PLACEMENT

- Unscrew the one screw on either side of the wheelchair that holds the seat in place.
- Attach the seat belt to the wheelchair by lining up the grommet holes on the seat belt with the screw hole and re-insert screws through both the seat belt and the wheelchair to hold the seat belt in place. Make sure the screws are tightened.
- Adjust the seat belt to the desired length using the black buckle that holds the adjustment strap in place.
- Place the monitor out of the reach of the resident. Suitable mounting location is the back of the wheelchair, so that the resident cannot tamper with the monitor.

TEST THE SYSTEM

- Buckle and unbuckle the seat belt to set off the alert. The monitor is now active. The alert will sound whenever the seat belt is unbuckled.
- When the system is activated, press the "Reset" button on front of the monitor to silence the alert.



Floor Mats

FLOOR MAT PLACEMENT

- Place the Floor Mat in the desired location such as a critical doorway or next to a bed.
- Place the monitor out of the reach of the resident.

TEST THE SYSTEM

- Step on the Floor Mat to set off the alert. The monitor is now active. The system will sound any time weight is on the Floor Mat.
- When the system is activated, press the "Reset" button on front of the monitor to silence the alert.

Need Set-up Help? (800) 650-3637

Quick Start Instructions

Need Set-up Help? (800) 650-3637

TL-2100CP

1 Install Batteries

The battery compartment door is secured with the included Phillips-head screw.

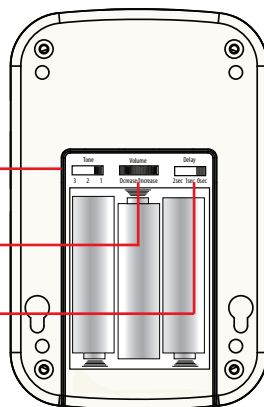
Tone Adjustment

Alert Volume Adjustment

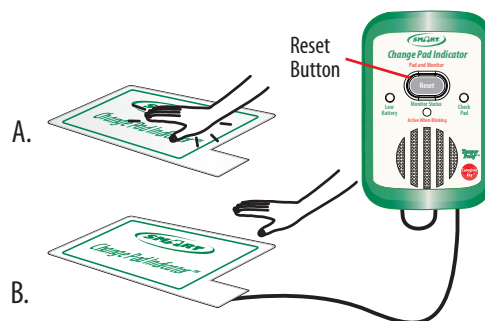
Alert Delay Adjustment

Close battery door and secure it with small Phillips-head screw.

Place monitor back into its plastic protective boot.



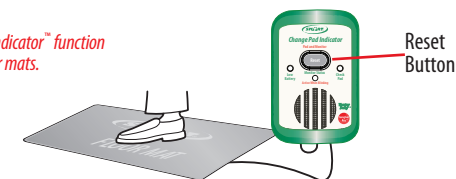
2 Test the System - Sensor Pads



Test the system. (A) Put pressure on the sensor pad to activate the pad and the fall monitor. The fall monitor will beep two times to indicate that the sensor pad and the fall monitor are in use. The "Status" light will blink while pressure remains on the pad. (B) When pressure is removed, the fall monitor will sound the alert tone. Press the Reset button to silence the alert.

3 Test the System - Floor Mats

Note: The Change Pad Indicator™ function does not work with floor mats.



Step on the floor mat.

The alert will sound. Press the Reset button to silence and reset the monitor.

4 Mounting the TL-2100CP



1 Mounting screw in headboard or wall.



2 Hang the monitor on the screws using the mounting holes on back of the monitor.

Monitor may mounted to a bed or a chair with the included locking mounting strap.

Change Pad Indicator™ Function



The Change Pad Indicator™ technology has an internal clock which begins timing the life of a Timed sensor pad once the pad has been plugged into monitor and pressure is on the pad. The pad timer will only record "time in use": time when the pad is plugged into the monitor and pressure is on the pad.

Ten days before the Timed sensor pad life expires, the Check Pad light on the monitor will illuminate and the monitor will chirp, alerting caregivers to replace the sensor pad. During this period, the monitor will still operate normally and may be reset. When the sensor pad life has expired, the system may no longer be reset, and a new sensor pad is required.

NOTE: The TL-2100CP Change Pad Indicator™ function only works with the Change Pad Indicator™ Timed Sensor Pads. Standard Smart sensor pads will work with the TL-2100CP Monitor, but will not cause the "Change Pad" light to illuminate when the pads have expired, therefore caregivers must manually track the life of the pad.

Resetting the Monitor/ Tamper Proof™ Mode with Caregiver Key™ (Optional)

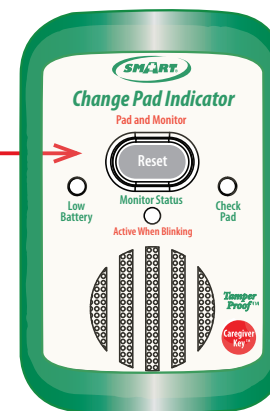
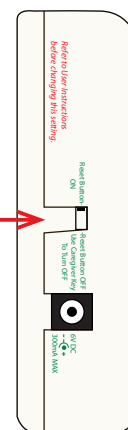
Caregivers can choose to reset the TL-2100CP in either of two ways:

Select either "Reset Button ON" or "Reset Button OFF, Use Caregiver Key™ To Turn OFF" with the switch on the side of the TL-2100CP Fall Monitor.

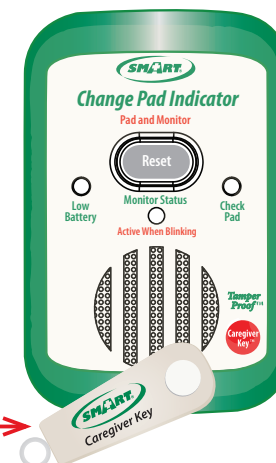
1. Press the **Reset** button on the front of the monitor ("Reset Button ON" mode).
2. Place the optional Caregiver Key™ over the red dot on the front of the monitor. ("Reset Button OFF, Use Caregiver Key™ To Turn OFF" mode).

This mode allows only the caregiver to reset the monitor.

For more information about the Caregiver Key™ and how it can be used in your facility's Fall Assessment Program call 800-650-3637



- 1 "Reset Button ON" Mode
Press the Reset button to reset the monitor.



- 2 "Reset Button OFF, Use Caregiver Key™ To Turn OFF" Mode.
Place the Caregiver Key™ over the red dot to reset the monitor.

