

TL-3100V 4-7-16

Tested and approved  
to IEC 60601-1-2  
Medical Devices  
General

CE

Quieter Fall Prevention™



- Works with most existing nurse call systems
- Recordable voice option
- Adjustable volume
- Mounts easily to bed or chair
- Easily moves from wheelchair to bed
- Works as magnet pull string or sensor pad/floor mat monitor (not simultaneously)

**TL-3100V**  
**DUAL Recordable Voice**  
**Magnet Chair Pull-String**  
**or Bed Pad Fall Monitor**

## Installation and Use Instructions

## TL-3100V DUAL Recordable Voice Magnet Chair Pull-String or Sensor Pad Fall Monitor

**WARNING:** Failure to comply with the warning may result in injury or death. This device is not suitable for all individuals. Other devices may be required. This device is not a substitute for visual monitoring by a caregiver. The manufacturer does not claim that this device will stop elopement and/or stop falls. This device is designed to augment caregivers' comprehensive resident mobility management program. **Test this device before each use. Read the instructions and Legal Disclaimer.**

The Smart Caregiver Corporation TL-3100V Monitor is designed to be installed by the end user. As such, it is the entire responsibility of the buyer to insure that the system is properly installed and tested. Further, the system is not designed to replace good caregiving practices including, but not limited to:

### A.) Direct patient supervision

### B.) Adequate training for staff personnel for fall prevention and elopement

### C.) Testing of the system before each use

WHERE PERMISSIBLE, IT IS THE SELLER'S INTENT TO LIMIT ANY LIABILITY FOR SPECIAL, CONSEQUENTIAL OR INCIDENTAL ECONOMIC DAMAGES TO REFUND OF THE PURCHASE PRICE OR REPLACEMENT OF THE GOODS. SELLER DISCLAIMS ANY LIABILITY FOR COMPENSATORY OR OTHER DAMAGES ARISING OUT OF THE USE OF THE GOODS.

**WARNING:** The manufacturer does not claim that this device will stop elopement and/or stop falls. This device is designed to augment caregivers' comprehensive resident mobility management program. This product is to be used by a licensed caregiver only.

Limited Warranty: Seller warrants that the goods sold will be free from defects of workmanship and manufacturing, for a period of one year from the date of sale. Other than this limited warranty, seller makes no express or implied warranties. Except for this limited warranty, NO EXPRESS OR IMPLIED WARRANTIES ARE GIVEN AND NO AFFIRMATION OF SELLER, BY WORDS OR ACTION, WILL CONSTITUTE A WARRANTY. THE GOODS BEING PURCHASED ARE BEING SOLD ON A "WITH ALL FAULTS" BASIS. THE ENTIRE RISK AS TO THE QUALITY AND PERFORMANCE OF THE GOODS IS WITH THE BUYER. SHOULD THE GOODS PROVE DEFECTIVE FOLLOWING THEIR PURCHASE, THE BUYER, AND NOT THE MANUFACTURER, DISTRIBUTOR OR RETAILER, ASSUMES THE ENTIRE COST OF ALL NECESSARY INSTALLATION, SERVICING OR REPAIRS.



**SMART CAREGIVER CORPORATION**

1229 North McDowell Blvd., Petaluma, CA. 94954 | Tel: 800-650-3637

sales@smartcaregiver.com | www.smartcaregiver.com

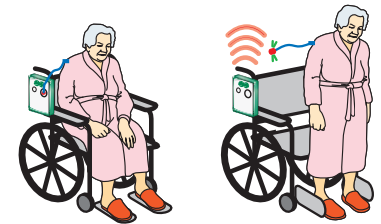
## Chair Pull String

### WHEELCHAIR PLACEMENT

- Mount monitor on chair.
- Place the monitor out of reach of the resident. Suitable mounting locations include: the back or handle of the wheelchair. Make sure the resident cannot tamper with the monitor.

### TEST THE SYSTEM

- Remove magnet from front of monitor.
- The alert will sound. Place magnet back on front of the monitor to silence the alert.



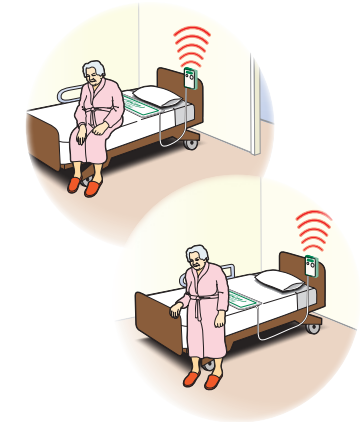
## Bed Sensor Pads

### BED PAD PLACEMENT

- Place the pad under the resident's shoulders to be alerted when the resident sits up in the bed.
- Place the pad under the resident's lower back/buttocks to be alerted when the resident vacates the bed.
- Place the monitor out of reach of the resident. Suitable mounting locations include: the back of headboard, the wall or under the bed. Make sure the resident cannot tamper with the monitor.

### TEST THE SYSTEM

- Plug the pad into the monitor and apply pressure to the pad to activate the system. The monitor will beep twice when active.
- The alert will sound when pressure is released from the pad. Press the "Reset" button on the front of the monitor to silence the alert.



## Floor Mats

### FLOOR MAT PLACEMENT

- Place the Floor Mat in the desired location such as a critical doorway or next to a bed.
- Place the monitor out of the reach of the resident.

### TEST THE SYSTEM

- Step on the Floor Mat to set off the alert. The monitor is now active. The system will sound any time weight is on the Floor Mat.
- When the system is activated, press the "Reset" button on front of the monitor to silence the alert.



**Need Set-up Help? (800) 650-3637**

# Quick Start Instructions

Need Set-up Help? (800) 650-3637

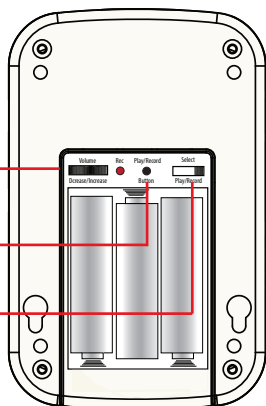
## 1 Install 3 AA Batteries

The battery compartment door is secured with the included Phillips-head screw

Alert Volume Adjustment

Play/Record Button

Select Play/Record Switch



## 2 Recordable Voice Function

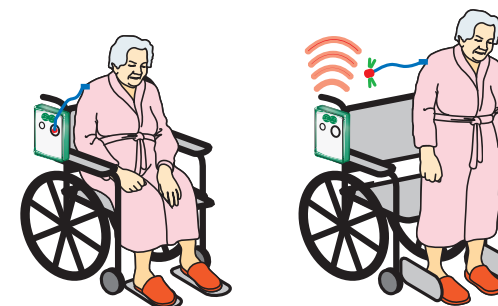
Allows you to record a personal message or song rather than using the standard alarm tone used on other monitors. *\*If you choose to use your own recording, it will take the place of the default tone that originally came on the monitor.*

1. Move the "Select Play/Record Switch" to the record position
2. Hold the "Play/Record Button" to record your message. You have 15 seconds of record time.
3. After completing your recording, move the "Select Play/Record Switch" to the play position.
4. Close battery door and secure it with the small Philips-head screw.
5. Place monitor back into its plastic protective boot.

## 3 Pull-String Operation For Chair Use

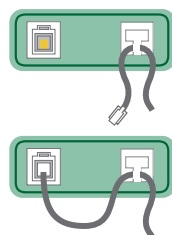
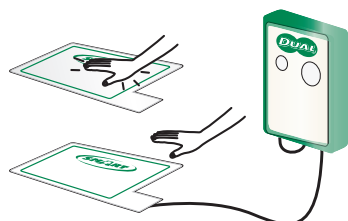
1. Place orange magnet on front of monitor
2. Mount monitor to chair
3. Attach garmet clip to residents clothing

*\*Pull-string function not recommended for bed use. Chair use only.*



## 4 Sensor Pad/Floor Mat Operation

1. Mount monitor to bed or wall
2. Pinch and loop cord and place through the strain relief tab on bottom of monitor
3. Connect pad to monitor
4. Test system



**Note:** Monitor can also be used with a chair sensor pad if desired.

*\*When using as a sensor pad monitor, the pull-string function becomes disabled. Both functions cannot be used at the same time.*

